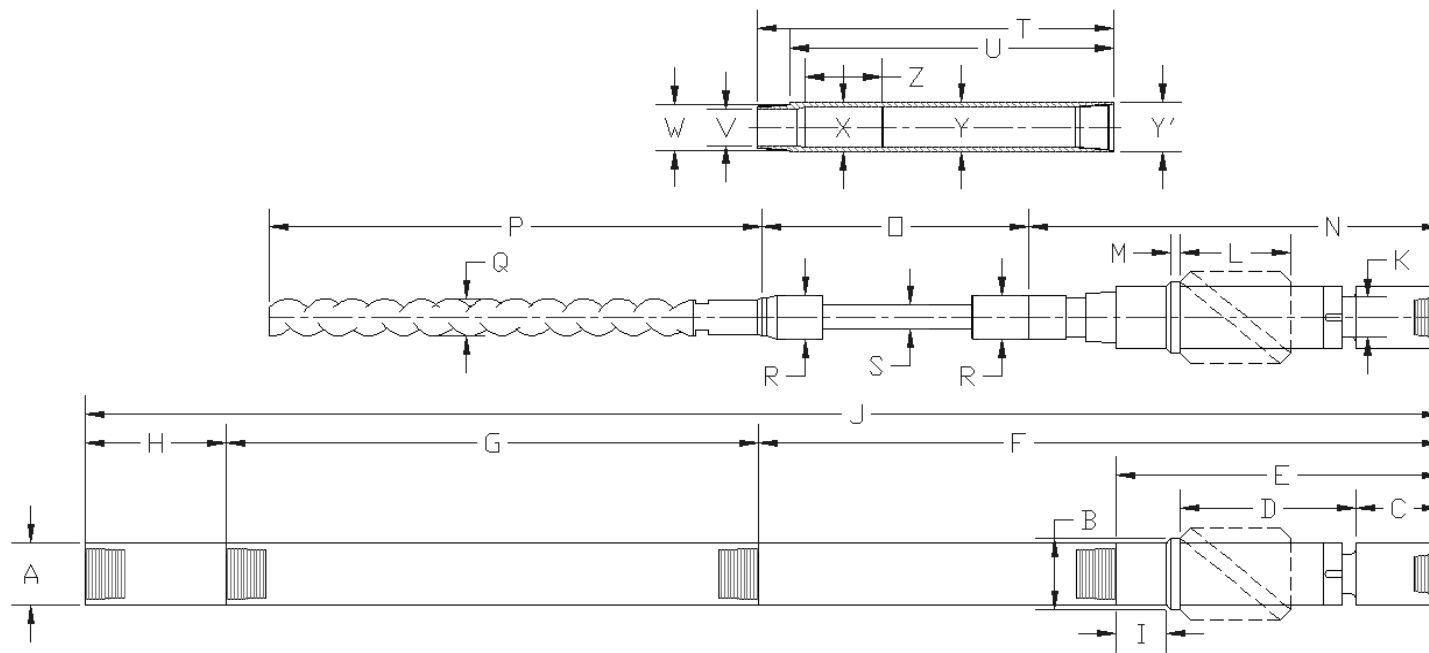


FISHING DIMENSIONS



Model Number	Fishing Dimensions (in)																										
	A	B	C	D	E	F	G	H	I	J	K	L	M	N	O	P	Q	R	S	T	U	V	W	X	Y	Y'	Z
5L-288-3	2.9		4.9		18.9	40.9	81.9	7.5		130.3	1.9			24.7	14.7	79.5	1.8	1.8		24.4	22.1	1.9	2.5	2.2	2.2	2.9	
7L-288-4	2.9		4.9		18.9	40.9	81.9	7.5		130.3	1.9			24.7	14.7	79.5	1.8	1.8		24.4	22.1	1.9	2.5	2.2	2.2	2.9	
7L-313-4	3.1		5.2		18.9	40.9	81.9	7.5		130.3	2.1			24.7	14.7	79.5	1.8	2.1		24.4	22.1	2.2	2.8	2.4	2.4	3.1	
5L-350-3	3.5		6.3		21.5	49.6	83.5	9.1		142.1	2.3			30.6	15.7	80.3	2.4	2.4		30.9	28.1	2.5	3.1	2.8	2.8	3.5	
1L-375-4	3.8		6.9		26.7	56.9	82.7	9.6		149.2	2.5			36.0	18.5	78.7	2.8	2.6	1.3	33.3	30.2	2.8	3.5	3.0	3.0	3.8	
5L-375-3	3.8		6.9		26.7	56.9	82.7	9.6		149.2	2.5			36.0	18.5	78.7	2.5	2.6	1.3	33.3	30.2	2.8	3.5	3.0	3.0	3.8	
9L-375-4	3.8		6.9		26.7	56.9	82.7	9.6		149.2	2.5			36.0	18.5	78.7	2.8	2.6	1.3	33.3	30.2	2.8	3.5	3.0	3.0	3.8	
5L-475-3	4.7	5.4	7.9	13.8	29.6	70.7	118.9	11.3	6.9	201.0	3.0	7.9	0.6	40.0	28.3	115.7	2.8	3.3	1.7	44.6	41.1	3.3	4.4	4.0	3.7	4.7	33.6
5L-475-4	4.7	5.4	7.9	13.8	29.6	70.7	100.3	11.3	6.9	182.4	3.0	7.9	0.6	40.0	28.3	96.1	2.8	3.3	1.7	44.6	41.1	3.3	4.4	4.0	3.7	4.7	33.6
5L-475-5	4.7	5.4	7.9	13.8	29.6	70.7	125.3	11.3	6.9	207.4	3.0	7.9	0.6	40.0	28.3	120.1	2.8	3.3	1.7	44.6	41.1	3.3	4.4	4.0	3.7	4.7	33.6
5L-475-6	4.7	5.4	7.9	13.8	29.6	70.7	150.4	11.3	6.9	232.4	3.0	7.9	0.6	40.0	28.3	144.1	2.8	3.3	1.7	44.6	41.1	3.3	4.4	4.0	3.7	4.7	33.6
7L-475-3	4.7	5.4	7.9	13.8	29.6	70.7	100.3	11.3	6.9	182.4	3.0	7.9	0.6	40.0	28.3	96.1	2.8	3.3	1.7	44.6	41.1	3.3	4.4	4.0	3.7	4.7	33.6
5L-650-4	6.5	7.2	9.2	21.4	40.6	85.7	152.2	15.2	8.1	253.0	4.6	12.0	1.2	54.3	28.9	146.5	3.8	4.4	2.4	49.1	45.1	4.5	5.8	5.1	5.1	6.5	12.2
5L-650-5	6.5	7.2	9.2	21.4	40.6	85.7	181.1	15.2	8.1	282.0	4.6	12.0	1.2	54.3	28.9	175.4	3.8	4.4	2.4	49.1	45.1	4.5	5.8	5.1	5.1	6.5	12.2
5L-650-6	6.5	7.2	9.2	21.4	40.6	96.8	214.6	15.2	8.1	326.6	4.6	12.0	1.2	54.3	39.3	208.7	3.8	4.7	2.6	60.2	56.1	4.5	5.8	5.5	5.3	6.8	12.2
9L-650-3.7	6.5	7.2	9.2	21.4	40.6	96.8	214.6	15.2	8.1	326.6	4.6	12.0	1.2	54.3	39.3	208.7	3.8	4.7	2.6	60.2	56.1	4.5	5.8	5.5	5.3	6.8	12.2
9L-650-4	6.5	7.2	9.2	21.4	40.6	85.7	152.2	15.2	8.1	253.0	4.6	12.0	1.2	54.3	28.9	146.5	3.8	4.4	2.4	49.1	45.1	4.5	5.8	5.1	5.1	6.5	12.2
5L-675-4	6.8	7.4	9.2	21.2	42.7	98.5	148.8	15.0	10.4	262.3	4.5	12.2	1.4	56.8	39.3	144.3	4.2	4.7	2.6	60.2	55.8	4.9	6.1	5.5	5.3	6.8	11.8
5L-675-5	6.8	7.4	9.2	21.2	42.7	98.5	181.5	15.0	10.4	295.0	4.5	12.2	1.4	56.8	39.3	175.6	4.2	4.7	2.6	60.2	55.8	4.9	6.1	5.5	5.3	6.8	11.8
5L-675-6	6.8	7.4	9.2	21.2	42.7	98.5	214.6	15.0	10.4	328.1	4.5	12.2	1.4	56.8	39.3	208.7	4.2	4.7	2.6	60.2	55.8	4.9	6.1	5.5	5.3	6.8	11.8
9L-675-2	6.8	7.4	9.2	21.2	42.7	98.5	90.2	15.0	10.4	203.7	4.5	12.2	1.4	56.8	39.3	85.0	4.9	4.7	2.6	60.2	55.8	4.9	6.1	5.5	5.3	6.8	11.8
9L-675-3.5	6.8	7.4	9.2	21.2	42.7	98.5	210.6	15.0	10.4	328.8	4.5	12.2	1.4	56.8	39.3	204.3	4.9	4.7	2.6	60.2	55.8	4.9	6.1	5.5	5.3	6.8	11.8
9L-675-4	6.8	7.4	9.2	21.2	42.7	98.5	175.2	15.0	10.4	203.7	4.5	12.2	1.4	56.8	39.3	170.1	4.9	4.7	2.6	60.2	55.8	4.9	6.1	5.5	5.3	6.8	11.8
5L-775-4	7.8	8.7	9.7	24.1	46.5	96.6	148.0	16.1	10.2	260.8	5.1	14.2	1.6	63.0	31.5	143.5	4.9	5.5	3.1	54.9	50.2	6.0	7.1	6.5	6.5	7.8	21.2
5L-775-5	7.8	8.7	9.7	24.1	46.5	96.6	181.1	16.1	10.2	293.9	5.1	14.2	1.6	63.0	31.5	176.6	4.9	5.5	3.1	54.9	50.2	6.0	7.1	6.5	6.5	7.8	21.2
5L-775-6	7.8	8.7	9.7	24.1	46.5	96.6	214.2	16.1	10.2	326.9	5.1	14.2	1.6	63.0	31.5	209.6	4.9	5.5	3.1	54.9	50.2	6.0	7.1	6.5	6.5	7.8	21.2
9L-775-4	7.8	8.7	9.7	24.1	46.5	96.6	148.0	16.1	10.2	261.6	5.1	14.2	1.6	63.0	31.5	143.5	4.9	5.5	3.1	54.9	50.2	6.0	7.1	6.5	6.5	7.8	21.2
5L-850-4	8.5	9.6	9.8	24.4	46.9	97.0	148.0	16.7	9.7	261.7	5.7	15.0	2.0	63.4	31.5	143.3	5.4	6.0	3.3	55.1	48.8	6.3	7.7	7.1	7.1	8.5	21.2
5L-850-5	8.5	9.6	9.8	24.4	46.9	97.0	181.1	16.7	9.7	294.8	5.7	15.0	2.0	63.4	31.5	176.4	5.4	6.0	3.3	55.1	48.8	6.3	7.7	7.1	7.1	8.5	21.2
5L-850-6	8.5	9.6	9.8	24.4	46.9	97.0	214.2	16.7	9.7	327.9	5.7	15.0	2.0	63.4	31.5	209.4	5.4	6.0	3.3	55.1	48.8	6.3	7.7	7.1	7.1	8.5	21.2
3L-963-6	9.6	10.9	10.2	25.6	48.5	104.6	219.3	24.6	9.3	348.5	6.5	15.7	2.6	65.0	36.6	213.8	5.9	6.5	3.5	61.5	56.1	6.9	8.9	7.9	7.5	9.6	13.4
5L-963-4	9.6	10.9	10.2	25.6	48.5	104.6	153.1	24.6	9.3	282.4	6.5	15.7	2.6	65.0	36.6	147.6	5.9	6.5	3.5	61.5	56.1	6.9	8.9	7.9	7.5	9.6	13.4
5L-963-5	9.6	10.9	10.2	25.6	48.5	104.6	186.2	24.6	9.3	315.4	6.5	15.7	2.6	65.0	36.6	180.7	5.9	6.5	3.5	61.5	56.1	6.9	8.9	7.9	7.5	9.6	13.4
5L-963-6	9.6	10.9	10.2	25.6	48.5	104.6	219.3	24.6	9.3	348.5	6.5	15.7	2.6	65.0	36.6	213.8	5.9	6.5	3.5	61.5	56.1	6.9	8.9	7.9	7.5	9.6	13.4